



NATURAL ATTITUDE

©
CESARO MAC IMPORT

COMPANY PROFILE





NATURAL ATTITUDE



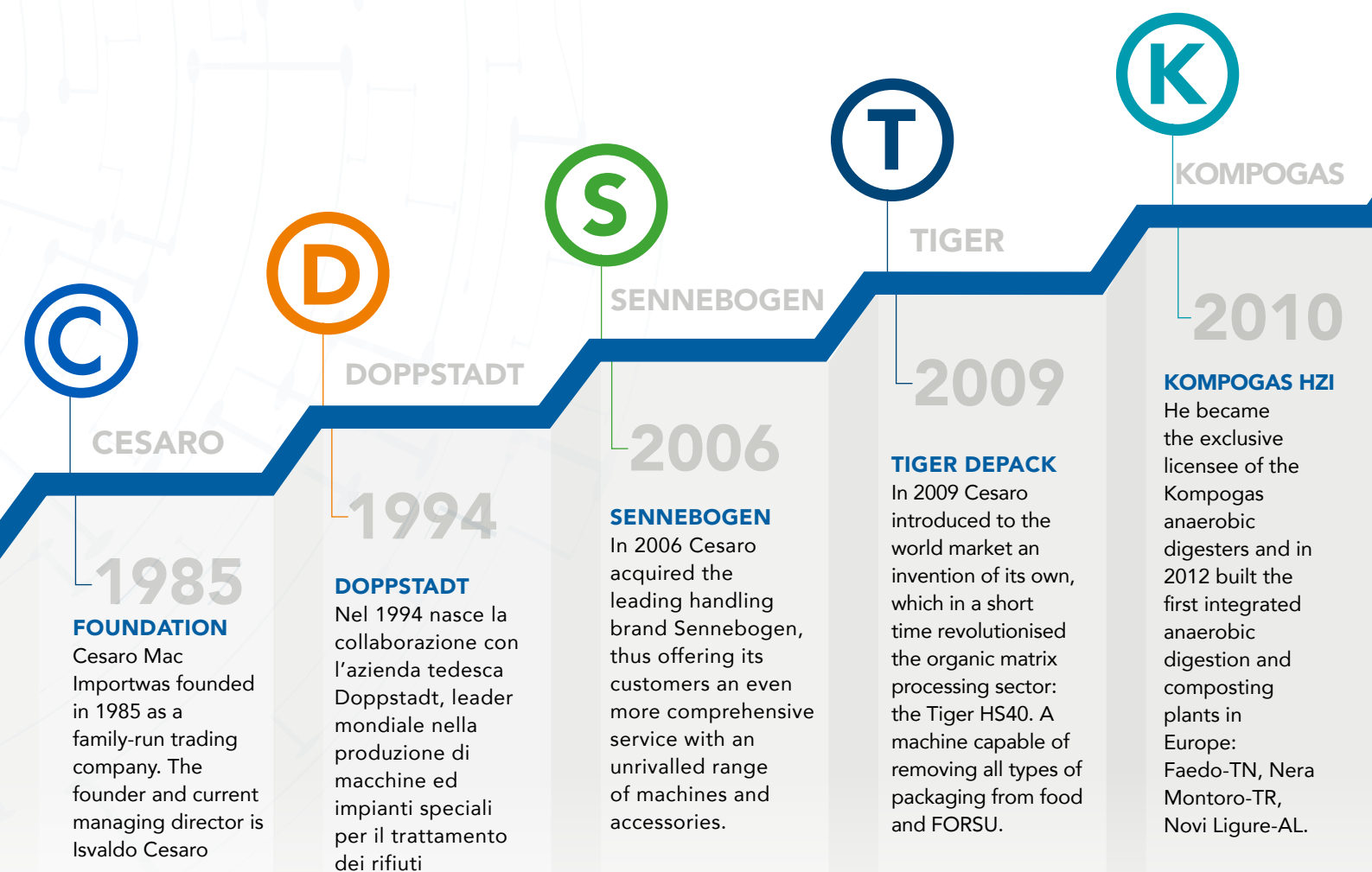


CESARO MAC IMPORT

NATURAL ATTITUDE

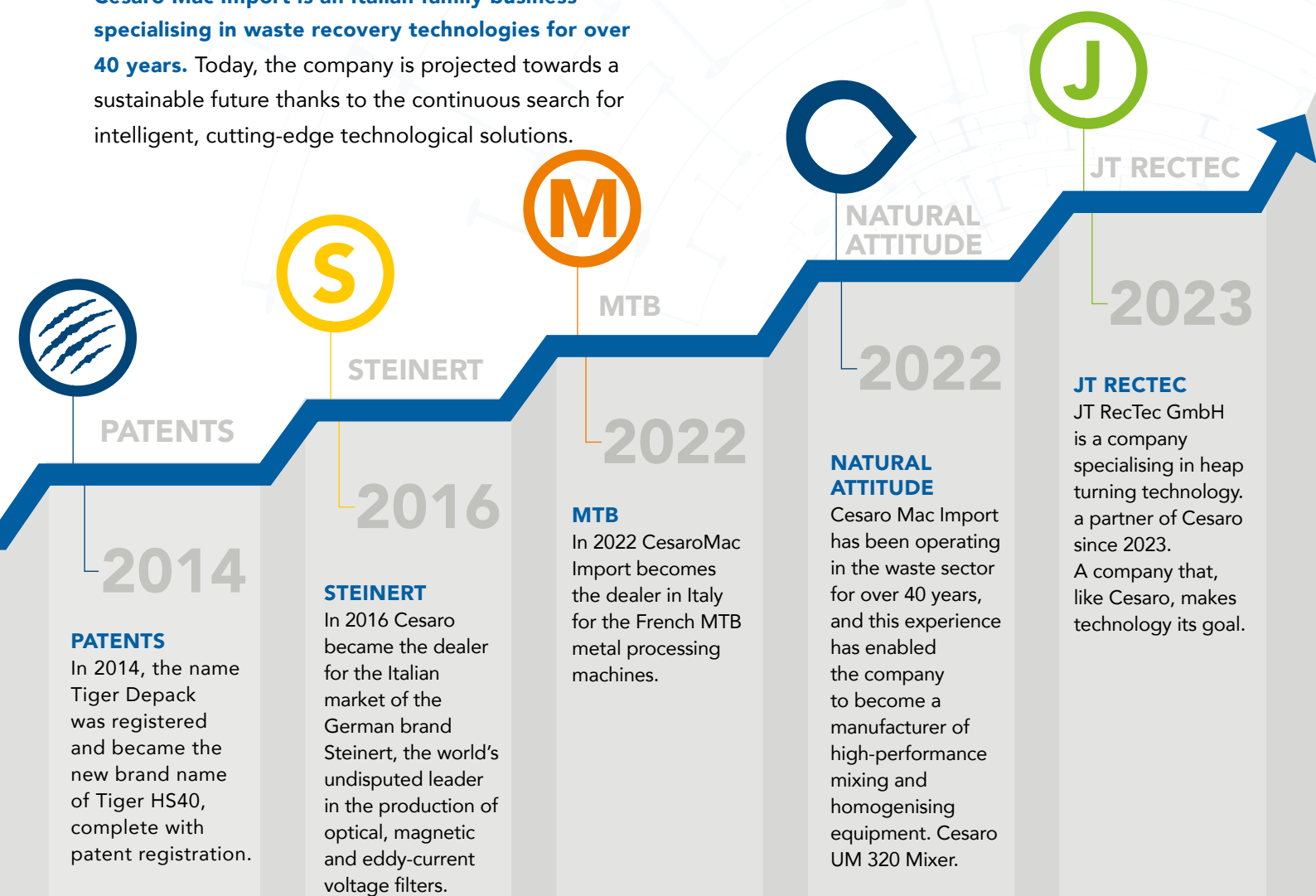
Climate crisis and ecological transition are vital issues in the creation of a sustainable future, and now, more than ever, we need everyone to play their part.

That is why the waste cycle is our business, the circular economy our mission, Natural Attitude our method.



A FAMILY STORY

Cesaro Mac Import is an Italian family business specialising in waste recovery technologies for over 40 years. Today, the company is projected towards a sustainable future thanks to the continuous search for intelligent, cutting-edge technological solutions.



NATURAL ATTITUDE IS THE SUM OF OUR VALUES, AND IT IS WHAT WILL ALLOW US TO DELIVER A BETTER WORLD TO FUTURE GENERATIONS.



NATURAL ATTITUDE

OUR APPROACH

NATURAL ATTITUDE

Giving purpose back to waste is the challenge that we face with competence and professionalism. Each proposed solution contains the accumulated knowledge, all aimed at achieving: reliability, operational flexibility, ease of maintenance and the possibility of future implementations and upgrades.

We work together every day to research and design the most efficient solutions, always aiming for the highest quality and the full satisfaction of our customers. Trust is a value we cultivate through the care and seriousness we offer our partners: listening and involvement at every stage of the process have enabled us to establish lasting partnerships.





ISO AND SOA COMPANY CERTIFICATIONS

Cesaro Mac Import is attentive to compliance with current regulations and standards, especially when it comes to the environment, which has always been at the heart of its corporate mission. For this reason, the company constantly checks each process to reduce the environmental impact of its activities as much as possible.

- > ISO 9001
- > ISO 14001
- > ISO 37001
- > ISO 50001
- > ISO 45001
- > SA 8000
- > COMPLIANCE 231

OVER THE YEARS, WE HAVE DEVELOPED THREE MAIN AREAS IN ORDER TO COVER ALL NEEDS IN THE ENVIRONMENTAL FIELD OF WASTE TREATMENT IN A MANIERA SYNERGIC MANNER.

ENGINEERING

A competent and responsible technical sector is at the heart of the evolution of a development- and innovation-oriented company.

Cesaro Mac Import has strengthened its skills by supplementing them with specific professionalism over the years. Combining commercialisation with the realisation of plant engineering projects has been a progressive refinement of skills. Over the years, the company has been able to respond effectively to complex requests thanks to the experience it has gained. Adaptation to specific realities and a rapid identification and response to the needs of each customer is the trademark of the Cesaro team.

SOLUTION

The proposed systems, machines and components are an example of high reliability, performance and durability.

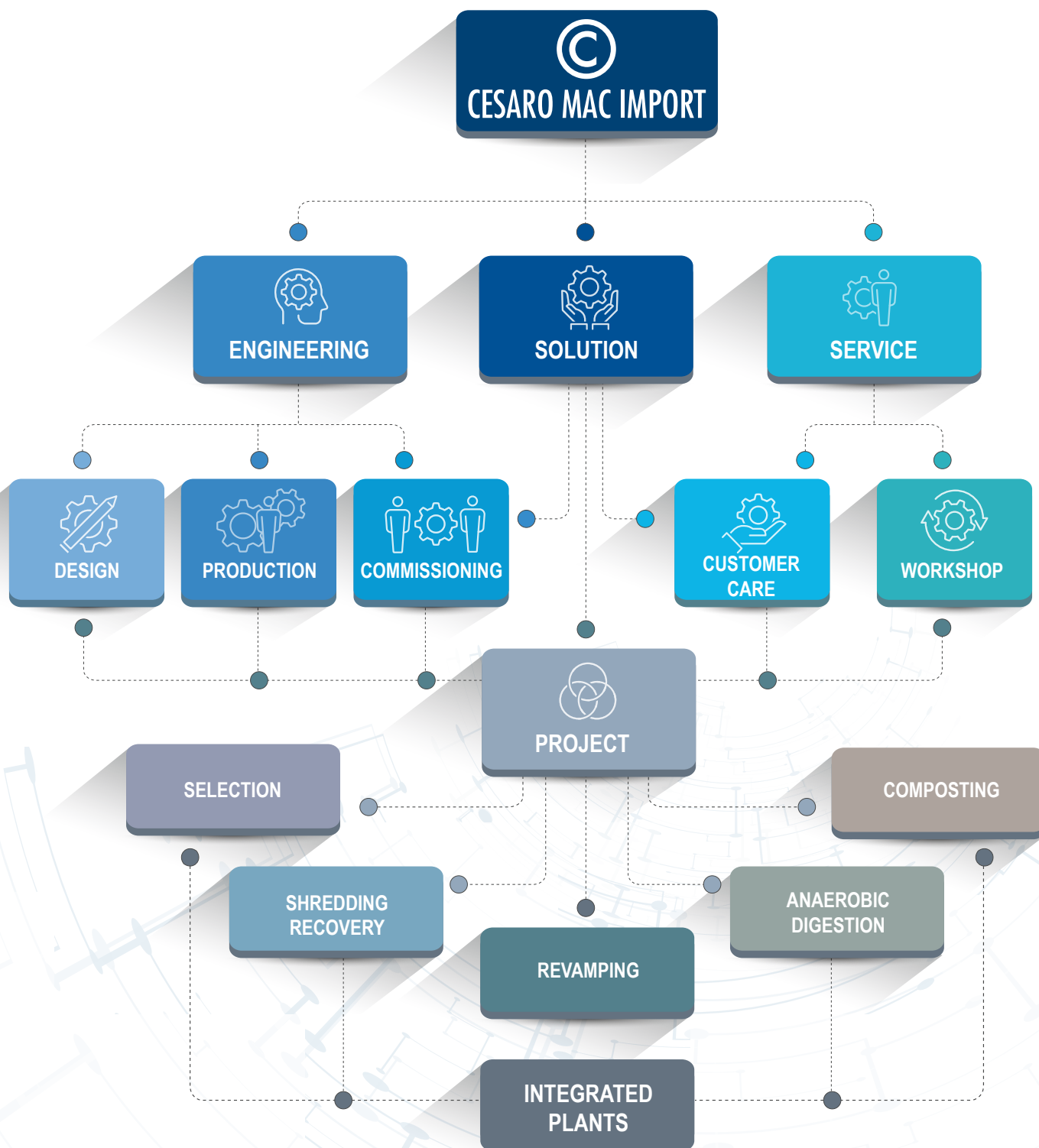
Careful choice of materials, engineering, constant dialogue with the customer and management have led the company to offer products that are qualitatively unique in the industry.

The design engineers, technicians and operators are innovation-driven people whose ideas and skills are capable of bringing about major changes on the environmental scene. The ultimate goal is to realise successful intervention plans in full cooperation with the customer.

SERVICE

Great emphasis and importance is placed on the assistance a company provides to the customer at every stage of the collaboration.

The Cesaro team will not only be available during the sales phase, but will also make itself available for effective and competent after-sales service, offering itself as a constant point of contact for customers.



A SINGLE FLOW OF WORK AND THINKING THAT ALLOWS MAXIMUM EFFICIENCY DUE TO DIFFERENT SUPPLIERS, A GUARANTEE OF ACCOUNTABILITY AND PROFESSIONALISM UNIQUE IN THE INDUSTRY.



ENGINEERING THE CORE OF EVOLUTION

Cesaro Mac Import's technical department is made up of professionals from a variety of backgrounds, each able to offer an integrated viewpoint on each project with their specific expertise.

The technical staff includes civil and construction engineers, surveyors, process engineers and biologists. What makes this group such a high-calibre team is its ability to integrate the professionalism and dedication that each individual brings to each project.





The technical department is able to understand and take on board the specific realities of each client, identify the real needs and understand the best way to approach the project, while respecting the completion and intervention time and the best cost-benefit ratio.

WITHIN A COMPANY WITH MANY TECHNICAL AREAS OF INTEREST, THE ENGINEERING SECTOR IS CALLED UPON TO PLAY MANY ROLES, FROM THE DESIGN, RESEARCH AND DEVELOPMENT OF NEW MACHINERY, TO THE REALISATION OF COMPLEX PROJECTS FOR WASTE TREATMENT PLANTS, NOT FORGETTING ASSISTANCE DURING THE CONSTRUCTION, ASSEMBLY, START-UP AND AFTER-SALES PHASES OF ALL PLANTS.



CESARO IS ALWAYS AT THE FOREFRONT OF TECHNOLOGICAL DEVELOPMENT THANKS TO ITS INDUSTRY VISION; MANUFACTURER OF PATENTED PROCESS OPTIMISATION TECHNOLOGIES EXPORTED WORLDWIDE

RESEARCH & DEVELOPMENT

A separate sector is dedicated to the development of new, cutting-edge technologies.



The test centre developed for the recovery sector for the valorisation of plastics from: multi-material collection, CSS, paper mills, composting plants.

The objective of the test centre is to give customers the opportunity to evaluate the incorporation of a final step for material recovery and valorisation of secondary raw materials for reuse in their treatment lines, even at the plants themselves.

The Tiger Depack Paper Pulp Solution project is aimed at the realisation of a machine for the valorisation of paper pulp waste, called Tiger Depack.





The new Unit Mix UM320 ned to optimise mixing processes for composting and stabilisation plants.

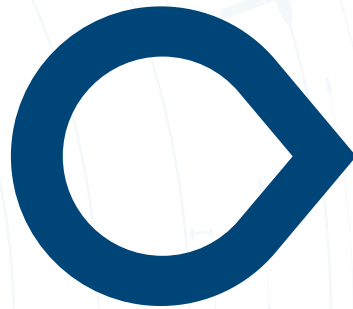
Il Girasole Tunnel Composting system combines the natural composting process with the most advanced control technology.



METICULOUS AND FUNCTIONAL MIXING OF ORGANIC WASTE, GREEN WASTE, SOIL, BARK MULCH AND SLUDGE TO OBTAIN THE REQUIRED MATRIX.

CESARO

Not just design and supply, but production of machinery and technology.



Cesaro Mac Import has been operating in the waste sector for over 40 years and its wealth of experience has enabled the company to also become a manufacturer of high-performance mixing machinery.

After the success achieved with the start-up of numerous plants and the continuous reliability and professionalism demonstrated in meeting customers' needs by supplying recycling machines, Cesaro Mac Import has now reached an ambitious milestone: under licence from Doppstadt, it has started production of a new mixer directly in its own factories.



The new machine will allow meticulous and functional mixing of organic waste, green waste, soil, bark mulch and sludge to obtain the required matrix. This mixer can be used in different types of plants such as mechanical biological treatment, anaerobic digestion and composting.

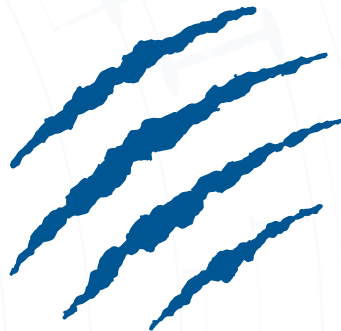




REFERENCE TECHNOLOGY AS WELL AS A TRUSTED SUPPLIER AND TECHNOLOGY PARTNER TO MAJOR COMPANIES IN THE GOODS AND FOOD PRODUCTION, AND WASTE.

TIGER DEPACK®

Continuous research to maximise the recovery of valuable matrices and optimise processes.



Tiger Depack brings together technologies specifically developed for the depackaging of packaged products and for the separation of recyclable and non-compostable materials.

Tiger Depack is already the technology of choice and a trusted supplier and technology partner to major companies in the food and product manufacturing sector, as well as in the anaerobic digestion and composting of waste.

Tiger Depack has more than 150 operations in plants in Europe, Australia, Canada and the United States.



Tiger Depack's main customers are manufacturing companies that are willing to directly recover their production waste for a new use.

Tiger Depack is a Cesaro Mac Import patent.





THANKS TO THE BIOTUNNEL COMPOSTING SYSTEM, IT HAS BEEN POSSIBLE TO ACHIEVE EXCELLENT RESULTS THROUGH THE REDUCTION OF WASTE AND HARMFUL SUBSTANCES WHILE REDUCING ODOUR EMISSIONS

IL GIRASOLE TUNNEL COMPOSTING

**A natural system designed specifically
to valorise organic waste.**



Il Girasole Tunnel Composting is an aerobic system for the treatment of organic waste in biotunnels, designed and developed by Cesaro Mac Import for the production of quality compost for use in traditional and organic agriculture. For this reason, the entire system takes place in biotunnels with controlled aeration and with forced and filtered air management systems with scrubbers and biofilters.



Since 2000, Cesaro has been developing this technology to best meet the customer's needs. Il Girasole TunnelComposting technology has always stood out on the market for its use of high-quality materials and accessories as well as for its state-of-the-art software. Today, the customer's expectations must match increasingly stringent regulations, and this translates into systems that operate at maximum efficiency with full respect for the environment.





SERVICE POINT OF BENCHMARK

From the outset, the company has focused its attention on the demands of those who have chosen to work with Cesaro's technologies.

Our team of experts is available at any stage of the partnership, from the purchase of a new machine to the design and implementation of a complex plant. For Cesaro Mac Import, offering the customer valid reasons to continue investing in the environmental sector and continuing to innovate is a priority.

The synergy of human, technical, logistical and organisational skills results in a reliable, precise and professional service offer, guaranteed by Cesaro's service personnel.





7000 m² covered workshop and 3000 m² di warehouse with specific areas dedicated to overhaul, mechanical and electrical repairs, vehicle storage, assembly, disassembly, washing and painting.

Home assistance guaranteed by several teams of technicians and 14 Service Vans, equipped for prompt assistance, able to cover the entire national territory, intervening both mechanically and electrically on any machine or equipment.

Always active telephone support service capable of easily handling all requests by channelling them to the most appropriate technical sector, and coordinating all types of intervention quickly.

External service to guarantee maximum timeliness at all times thanks to the active collaboration with authorised support workshops located throughout Italy.

Training centres in Cesaro's factories where refresher courses are held for all technicians and support staff.

ENGINEERS, TECHNICIANS, WORKERS AND ALL THE NECESSARY TOOLS TO ACT WITH METHODOLOGIES AIMED AT OPTIMISING PRODUCTION AND TIMELY INTERVENTION WITH THE AIM OF ACHIEVING CUSTOMER EXPECTATIONS.



GUARANTEED MAINTENANCE AND OVERHAUL THANKS TO COMPETENT PERSONNEL, ORIGINAL SPARE PARTS, PRECISION INSTRUMENTS AND ELECTRONIC TERMINALS FOR CHECKING AND VERIFYING THE CORRECT OPERATION OF THE MACHINES.

WORKSHOP

A punctual and professional maintenance service for all machines, carried out by specialised technicians at the customer's facility, or in Cesaro's workshops if maintenance or overhaul requires a more complex process

Cesaro Mac Import, as the exclusive dealer for partner brands, services all the machines in the country. These are then monitored on a regular basis, allowing Cesaro's team of experts to track their history and promptly identify maintenance needs. Those who purchase a used Doppstadto Sennebogen (or Atlas, Minelli, Tabanelli, Cat, Liebherr, Solmec and others) from Cesaro Mac Import can count on precise and accurate maintenance, as from the parent company.





REVISIONS

Thanks to the skills of its technicians and its state-of-the-art facilities and equipment, Cesaro can restore any machine to new whatever its condition.



Cesaro's workshop is equipped to overhaul every part of the machine. Carpenters, painters, mechanics, motorists, hydraulics experts, electricians and electricians are available with the expertise to overhaul every part of the machine. Each component will be carefully checked during and after the overhaul. Cesaro uses only the latest original spare parts purchased directly from the parent company. All new parts are backwards compatible with the machines of previous versions, thanks to the construction method. This is why Cesaro Mac Importoffers a full guarantee on its overhauls. Thanks to the skills of its technicians, facilities and state-of-the-art equipment, Cesaro can restore any machine to new, whatever its condition.



SOLUTION | COMMISSIONING | PRODUCTION | COMMERCIAL | PROJECT

SOLUTION THE PRODUCT AS A SOLUTION



When supply becomes an integral part of the best technological solution, Cesaro is a partner in choice.



The product for Cesaro Mac import is the solution to the customer's needs. Thanks to direct comparison and the experience gained over the years, Cesaro is able to recommend the best technology for the result to be achieved. Thanks to the team, every solution is analysed and every product inserted and chosen with care, right up to commissioning and customised set-up.

Doppstadt

ALLRECO

SENEBOGEN

MTB

RELTec





Solutions are our goal: from shredding to screening, from mixing to state-of-the-art handling thanks to forward-looking partners.



SHREDDING, SCREENING, DEMOLITION,
HANDLING, DEPACKAGING, OVERSIZE TREATMENT,
MIXING, BIOMASS/FORAGE AND CSS ARE THE
SOLUTIONS ICESARO MAC IMPORT AT YOUR
DISPOSAL.





SHREDDING

A product that is effectively reduced in volume is the first step towards its transformation.

The essential focus of waste shredding is the volumetric reduction of the material fed into the machine. The type of material involved determines the difference between slow shredding, in which undifferentiated waste of urban and organic origin is processed, or fast shredding, which deals with wooden fractions.



SCREENING

Careful selection to obtain a homogeneous end product.

The separation of suitable and unsuitable material is a fundamental step in the product processing cycle, where the aim is to select material that has already been shredded from inhomogeneous to the desired dimensional standard.





DEMOLITION

Innovation starts with a space that is ready for new ideas.

Fast and effective demolition is possible thanks to powerful machines that, with the aid of special accessories, are not afraid of even the most imposing buildings.



HANDLING

Without movement there is no fruitful production.

This involves the physical movement of processed materials, whatever they may be, inside a machine, in a plant or elsewhere.



DEPACKAGING

The separation of materials is a guarantee of a new life.

Reuse is one of the keys to an increasingly sustainable future, and depackaging is part of this. Separating the content from the container to enhance both.



OVERSIZED TREATMENT

Recovery is not an option but our duty.

Material that does not meet the standards of the first processing stages may not be discarded immediately. optimisation is done with air-ulic sorting machines that use air as a sorting tool or centrifuges that separate the liquid element from the solid element



MIXING

The homogenisation of matrices as a step into the future in innovation.

Process used in different types of production in order to homogenise different materials and create a compound useful for the following steps.





BIOMASS FODDER

Not only waste, but also farm animals and energy production from renewable sources.

For fodder, it is planned to eliminate the packaging that wraps the green plant material, making it ready for processing into feed for livestock. The size in biomass production is crucial and the choice of the right machinery is key.



SECONDARY SOLID FUEL

From waste treatment to fuel for new and innovative energy.

Refuse-derived Fuel (RDF) is the product of a process of refining and size reduction of the dry fraction waste fraction of MSW (municipal and special non-hazardous waste).



PROJECT THE ENERGY OF RECOVERY

Since the construction of the first plant in 1998, Cesaro has continued to develop advanced solutions to optimise waste recovery and technologies for the production of renewable energy.



Decades of experience have seen Cesaro involved in numerous plants all over Italy, from cold mechanical sorting for the valorisation of recoverable matrices to plants for the management of organic waste, in which the experience of combining technology and good practices has yielded tangible results in the north and south of Italy.



YOUR PARTNER
FOR ORGANIC WASTE AND RECOVERY SOLUTION









A plant that is well integrated within the territory will be more productive and the population will be incentivised to adopt behaviours that make it work better, such as better differentiated waste collection.

The example of this commitment is the plant in Faedo (TN), immersed in Trentino's vineyards, which was built in 2012 and awarded the Legambiente Green Flag in 2016 and is the first and only plant in Italy to date to have received such an award.



COMPOSTING

Biological treatment plants in Biotunnel.

Composting technology is the first form of organic waste recovery used by man. Today, thanks to developed technologies, the process takes place in full compliance with regulations on an industrial scale. Plants with a biotunnel system using Cesaro's Il Girasole Tunnel Composting technology are able to obtain quality compost from waste from separate collection.



CUSTOMER	PLACE	TUNNELS	TREATMENT CAPACITY T/YEAR	YEAR OF CONSTRUCTION
Comune di Ostellato	Ostellato (FE)	10	40.000	2004
Saf	Frosinone (FR)	6	200.000	2007
Cavallino	Lecce (LE)	14	150.000	2007
Aciam	Aielli (AQ)	8	69.000	2008
Maserati	Piacenza (PC)	9	40.000	2008
Pubbliambiente	Pistoia (PT)	1	15.000	2008
Acom	Borgo San Lorenzo (FI)	9	35.000	2009
Kyklos	Aprilia (LT)	8	60.000	2009
Koster	Novara (NO)	3	45.000	2010
Selfgarden	Aprilia (LT)	4	45.000	2010
Verdevita	Sassari (SS)	6	15.000	2011
Ternigreen	Nera Montoro (TR)	10	35.000	2012
Bioenergia	Cadino (TN)	7	35.000	2012
Publiambiente	Pistoia (PT)	3	15.000	2015
Asja	Foligno (PG)	8	40.000	2017
Sicula Compost	Catania (CT)	10	70.000	2017
Asja Legnano	Legnaro (MI)	8	40.000	2021
Heracle	Erchie (BR)	20	80.000	2021
Enval Aosta	Brissogne (AO)	3	23.000	2021
Ecolan	Lanciano (CH)	10	40.000	2023
Bionenergia	Cadino (TN)	2	5.000	2023
CSA	Castelforte (LT)	6	25.000	2024



AEROBIC TREATMENT OF THE ORGANIC MATRIX ALLOWS METHANE PRODUCED BY DECOMPOSITION TO BE FIXED WITHIN THE SOIL, REDUCING GREENHOUSE GAS EMISSIONS IN LINE WITH THE UNITED NATIONS OBJECTIVES OF GLOBAL METHANE PLEDGE

CUSTOMER	PLACE	VENTILATED SLABS	TREATMENT CAPACITY T/YEAR	YEAR OF CONSTRUCTION
Comune di Castelfondo	Castelfondo (TN)	4	5.000	2001
Kyklos	Aprilia (LT)	2	20.000	2002
Selfgarden	Aprilia (LT)	2	15.000	2005
Aciam	Aielli (AQ)	13	69.000	2008
Maserati	Piacenza (PC)	10	40.000	2008
Saf	Frosinone (FR)	2	200.000	2008
Acom	Borgo San Lorenzo (FI)	5	35.000	2009
Kyklos	Aprilia (LT)	4	60.000	2009
Verdevita	Sassari (SS)	6	15.000	2011
Ternigreen	Nera Montoro (TR)	4	35.000	2012
Bioenergia	Cadino (TN)	8	35.000	2012
Cirsu	Giulianova (TE)	4	10.000	2015
Asja Legnano	Legnano (MI)	4	40.000	2021
Ecolan	Lanciano (CH)	5	40.000	2023



ENERGY RECOVERY PLANTS

Energy recovery from the organic fraction from waste separation is a technology that can meet the 2030 and ESDG targets that are the focus of global attention today.



In particular, the energy transition through waste recovery, seen from the perspective of a circular economy, is the topic most at the centre of global commitments.

Cesaro's technology in the field of fuel production from the recovery of the organic fraction is constantly at the forefront, as evidenced by the numerous plants currently in operation since 2012 and those under construction.

ANAEROBIC DIGESTION IS A NATURAL PROCESS THAT DEVELOPS SPONTANEOUSLY UNDER AIRLESS CONDITIONS. THANKS TO THE EXPERTISE OF THE CESARO TEAM, A PROVEN SYSTEM WITH HIGH BIOLOGICAL EFFICIENCY AND STRUCTURAL RELIABILITY HAS BEEN DEVELOPED.

BIOGAS IS THE FIRST PRODUCT OF ANAEROBIC DIGESTION AND IS THE FUEL FROM WHICH, THROUGH THE COGENERATION PROCESS, ELECTRICITY IS PRODUCED, AND/OR THROUGH THE UGRADING PROCESS, BIOMETHANE IS PRODUCED FOR AUTOMOTIVE USE. BIOGAS IS THUS THE CLOSING LINK IN THE PROCESS OF VALORISATION OF ORGANIC WASTE AND TRANSITION TO A NEW CYCLE OF CIRCULAR ECONOMY.



CUSTOMER	PLACE	TREATMENT CAPACITY T/YEAR	NUMBER OF DIGESTERS	YEAR OF CONSTRUCTION
S.R.T.	Novi Ligure (AL)	20.000	1	2012
TERNIGREEN	Nera Montoro (TR)	35.000	1	2012
BIOENERGIA	Cadino (TN)	40.000	2	2012
ASJA	Foligno (PG)	40.000	2	2017
HERA	Sant'Agata Bolognese (BO)	100.000	4	2018
ASJA	Legnano (MI)	53.000	2	2021
IREN	Gavassa (RE)	100.000	4	2023
CONTARINA	Trevignano (TV)	45.000	2	2023
HERACLE	Erchie (BR)	30.000	1	2024
ECOLAN S.P.A.	Lanciano	40.000	2	In Progress
CIP-ORISTANO	Oristano	20.000	1	In Progress
KOSTER S.R.L.	Novara	60.000	2	In Progress



BIOENERGIA
TRENTINO

INTEGRATED PLANTS

The anaerobic plant for recovering energy from the organic fraction and the aerobic plant for composting the digestate resulting from the first process, get the most out of their fusion. In fact, it was on the basis of a Cesaro idea that the two processes were sequenced in 2012.

The combination of these two plants allows for the total reduction of liquid waste, which is entirely reused in the composting process, as well as the timely control of the air, which is filtered with scrubbery biofilters.

The goodness of this idea is strengthened by the fact that it can be applied to existing plants that have the first or second process in operation. A distinctive feature of Cesaro is the continuous improvement in a circular economy perspective that can also be applied to the plants, which can thus be completed, processes and technology evolve.



CUSTOMER/ YEAR OF CONSTRUCTION	PLACE	DIGESTER TREATMENT CAPACITY T/YEAR	NUMBER OF DIGESTERS	NUMBER OF DIGESTERS BIOTUNNEL TREATMENT CAPACITY T/YEAR	NUMBER OF TUNNELS AND/OR AERATED BEDS
TERNIGREEN 2012	Nera Montoro TR	11.000	1	35.000	10
BIOENERGIA TRENTINO 2012	Cadino TN	40.000	2	35.000	7
ASJA 2017	Foligno PG	16.000	2	40.000	8
ASJA 2021	Legnano	53.000	2	53.000	8
HERACLE 2022	Erchie	30.000	1	80.000	20
ECOLAN 2023	Lanciano (CH)	40.000	2	40.000	10

THE VALIDITY OF THE COMBINED PROCESS EARNED THE GREEN FLAG FROM LEGAMBIENTE IN 2016 FOR THE FIRST PLANT THAT WENT INTO OPERATION IN 2012 IN CADINO (TN) AND IS IN OPERATION TODAY.



MECHANICAL WASTE TREATMENT PLANT

Cold waste treatment is a process aimed at enhancing the value of matrices from waste collection. Cesaro brings to the field its extensive experience in technical consultancy and the realisation of customised technical solutions.



The first objective is multi-material sorting to select differentiated waste in order to adapt it to the quality standards required by the Corepla, Coripet, Comieco, Ricrea and Cial consortia, which then deal with recovery and recycling. Another type of mechanical treatment is the shredding of unsorted waste to separate the dry fraction from the wet fraction, which is then subjected to aerobic biostabilisation in biocells. These plants are realised with a complex air extraction system that flows into an efficient air treatment system.



PRE-TREATMENT, DEDICATED MULTI-MATERIAL SORTING OF SORTED WASTE AND SHREDDING OF UNDIFFERENTIATED WASTE ARE THE KEY ELEMENTS OF THE COLD WASTE TREATMENT PLANT.



OUR BRANDS PARTNERS OF EXCELLENCE

Our family history has also grown thanks to the technological partners that have supported us over the last 40 years. We have established solid partnerships with major international companies in the sector, from the supply of a single machine to solutions involving the installation of complex systems.

Choosing a partner is a responsibility to our customers. Being able to provide continuity of supply and continuous technological updating are an integral part of the relationship we create with our partners.

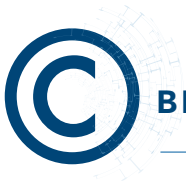
Companies such as Doppstadt Sennebogen are well aware of this, and have created a relationship of mutual trust and satisfaction with Cesaro Mac Import in creating efficient, state-of-the-art solutions.

The ability to be constantly up-to-date with current regulations, and in some cases even precursors, also comes from the possibility of being able to count on excellence with partners.



THE CESARO TEAM CAN COUNT ON INTERNATIONAL PARTNERS OF EXCELLENCE CAPABLE OF COLLABORATING EFFECTIVELY ON EVERY SOLUTION.





DOPPSTADT DEALS WITH SPECIALISED MOBILE MACHINES FOR THE TREATMENT OF WASTE AND WOOD, FOR PRE-TREATMENT, PROCESSING AND SEPARATION PLANTS.

DOPPSTADT

The world's leading manufacturer of machines
and systems for waste treatment.

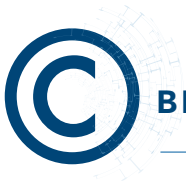


Since its founding in 1965, Doppstadt has developed from a family-run agricultural services company to a leading international supplier of environmental technology solutions.

Doppstadt is a manufacturer of mobile machines specifically for waste and wood treatment, pre-treatment, processing and separation plants.

Our more than 40 years of experience, combined with Doppstadt's 4,000 shredders and screening systems, testify to the high quality and efficiency that have kept our partnership with a major brand and industry expert alive.





THE PRIORITY IS TO PROVIDE SIMPLE, VERSATILE AND EASY MAINTENANCE SYSTEMS,
AS WELL AS OFFERING THE BEST COST/BENEFIT RATIO FOR EACH PRODUCT.

ALLRECO

**Simplicity and electricity as characteristics
basics of the brand.**

ALLRECO

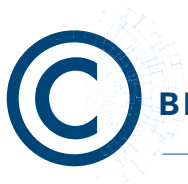


Founded by Werner Doppstadt, Allreco is the sister company of the German giant always engaged in waste treatment but distinguishing itself from it for production of electric and stationary machines.

The priority is to provide simple, versatile systems, and easy to maintain as well as offer the best cost/benefit ratio for each solution.

Allreco offers a wide range of products which include fixed machinery for the construction of plants in the area environmental technology and recycling, as well as for the separation segment, producing drum screens and systems of selection.

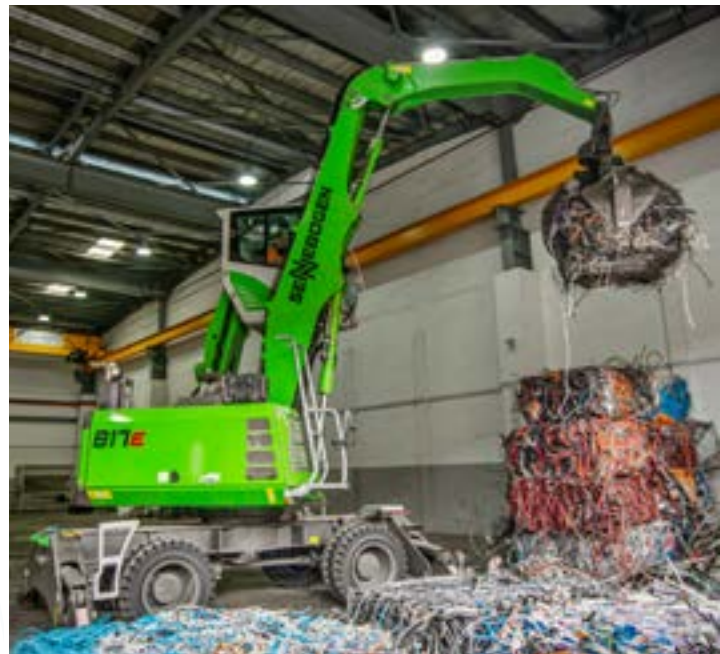




THE SIMPLICITY OF MAINTENANCE, ROBUSTNESS AND QUALITY HAVE ALLOWED
IN SENNEBOGEN TO SATISFY THOUSANDS OF CUSTOMERS ALL OVER THE WORLD.

SENNEBOGEN

German brand at the forefront in the sector
of material handling.



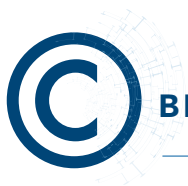
Sennebogen, with an experience of almost 60 years old, he is a point of reference for everyone the companies that carry out the handling and of lifting the cornerstone of its business.

Every "green line" charger, accompanied by a great variety of accessories optimizes any type of work solving every difficulty and need in the field of handling.

Simplicity of maintenance, robustness and quality have allowed Sennebogen to satisfy thousands of customers around the world.

All machines are available in versions wheeled, tracked, with four-wheel steering, in special version, with portal structure and electric fixed version.





MTB ECO-SYSTEM: NETWORK OF COMPANIES AND PARTNERS UNITED TO RESPOND TO NEEDS OF CUSTOMERS, ORGANIZED IN THE HUBS: PRODUCTION, SERVICE AND RECYCLING.

MTB

A market reference in recycling
of non-ferrous metals.

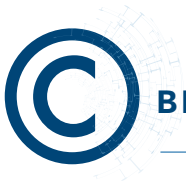


Based on 40 years of experience, the company has diversified recycling capabilities and continuously improved the quality and the robustness of the machines. Specialized in the processing of copper and aluminum cables, waste from electrical equipment and electronic waste (WEEE), ordinary industrial waste (OIW), tires, scrap metal, etc.

The founder of the company, Francis Sevilla Since 1981, he has developed mechanical methods to recycle non-ferrous metals from cables. Today the company is a MTB ECO-SYSTEM: network of companies and partners united to respond to the needs of customers, organized into the following hubs: production, assistance and recycling.

Cesaro has been a partner of MTB since 2022 for products for metal treatments.





JT RECTEC GMBH IS A COMPANY SPECIALISING IN HEAP TURNING TECHNOLOGY FOUNDED IN 2021

JT RECTEC

"We want to advance technology through real innovations for our customers"



The company develops and sells compost turners. It also offers a full range of after-sales services thanks to the global dealer network it has established. JT RecTec's customers include local authorities, private waste disposal companies, garden companies and farms.

The CEO of JT RecTec, Thomas Hölscher and Jens Wiechmann, are united by a common dream: 'we want to rethink waste turner technology and bring it to full automation'.

Before founding the company, the two industrial machine specialists had already been working in the field of composting and organic matrices treatment technology for 30 years. "At a certain point, maintaining the status quo was no longer enough for us. We wanted to advance the technology through real innovations for our customers"



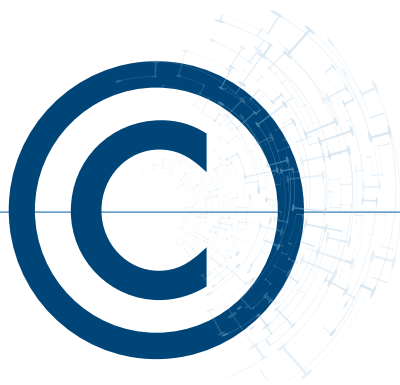
A full-page background image featuring the silhouette of a woman in a dark, short-sleeved dress standing in a field of tall grass. The scene is backlit by a bright, low sun, creating a warm, golden glow and long shadows. The image is framed by large, overlapping circular shapes in shades of grey and white.

CESARO MAC IMPORT
N A T U R A L A T T I T U D E





A BETTER WORLD FOR FUTURE GENERATIONS



CESARO MAC IMPORT

N A T U R A L A T T I T U D E

Via delle Industrie 28 - 30020
Eraclea - I - Venezia
Tel. +39 0421 231101
Fax +39 0421 233392
cesaro@cesaromacimport.com



CESAROMACIMPORT.COM

SUBSCRIBE TO OUR NEWSLETTER TO STAY UP TO DATE

