

WASTE WOOD

APPLICATIONS



WASTE WOOD RECYCLING

A solution for all wood materials

The machine combination varies depending on the material properties and on the recycling situation. The individual process steps can be adapted as required. These include various options for shredding, screening and the iron and non-iron metal separation.

POSSIBILITIES OF WASTE WOOD TREATMENT:

Pre-shredding » screening » (oversize return)
 Pre-shredding » screening » fine shredding
 Pre-shredding » fine shredding
 Fine shredding

POSSIBILITIES OF WASTE WOOD UTILIZATION:

Recycling » in the timber industry
 Energetic » production of different qualities of wood chips for biomass power plants
 » production of pellets for heating

ALLRECO. KOMPLETT. DURCHDACHT.

It all started in Niederberg in the "Bergisches Land" region. Hedwig, Werner, and Josef Doppstadt established the "Doppstadt" agricultural contractor company. Today the passion for technical innovations, inventiveness and the perception of market requirements are still the fundamental motive forces for the successful creativeness of the Langenberger Innovation

Group (LIG) with the 2nd generation of shareholders. ALLRECO, with a long Doppstadt history, is directly owned by the LIG since 2021.

Our core business includes machines and plants for the processing and separation of waste wood, MSW, commercial and industrial waste, biomass processing and refuse-derived fuel production.

We are a team of highly qualified and experienced employees, and we can offer our customers tailor-made high-quality machines and completely thought-out plant solutions to meet their requirements.

With a lot of flexibility and inventiveness, we are ready to move great things with you!

At a glance:

- Bulky waste
- Industrial waste wood
- Waste from woodworking such as furniture industry, floor/panel production
- Wooden packaging such as pallets, boxes, cable reels
- Construction and demolition waste such as solid wood, chipboard, formwork, doors, windows, construction wood, residual wood from gardening and landscaping
- Waste wood from waste treatment plants
- Railway sleepers



WE CAN DO ALL APPLICATIONS!

Categories of waste wood



CATEGORIE A I

Natural wood or only mechanically processed wood (not significantly contaminated with non-wood materials)

CATEGORIE A II

Glued, painted, coated, varnished or otherwise treated wood without halogenated organic compounds in the coating and without wood preservatives

CATEGORIE A III

Waste wood with halogenated compounds in the coating (dye treated wood), without wood preservatives

CATEGORIE A IV

Wood highly contaminated by wood preservatives, such as railway sleepers, line masts, hop poles, vine poles and other waste wood contaminated with pollutants



EXEMPLARY PROCEDURES AT A GLANCE

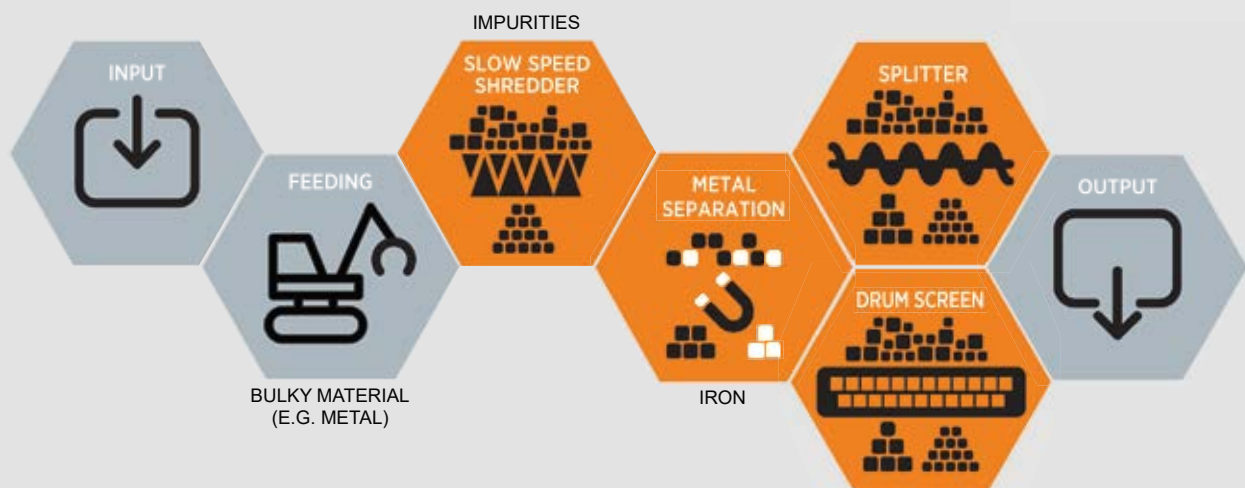


AUTOMATIC DETECTION OF CONTAMINANTS AND DISCHARGE

The reversible underbelt can be used to discharge contaminants before they are transferred to the downstream equipment, and/or to create a separate material discharge, e.g. for mono-fractions.

PROCESS DIAGRAM

PRE-SHREDDING >> SCREENING >> OVERSIZE RECIRCULATION



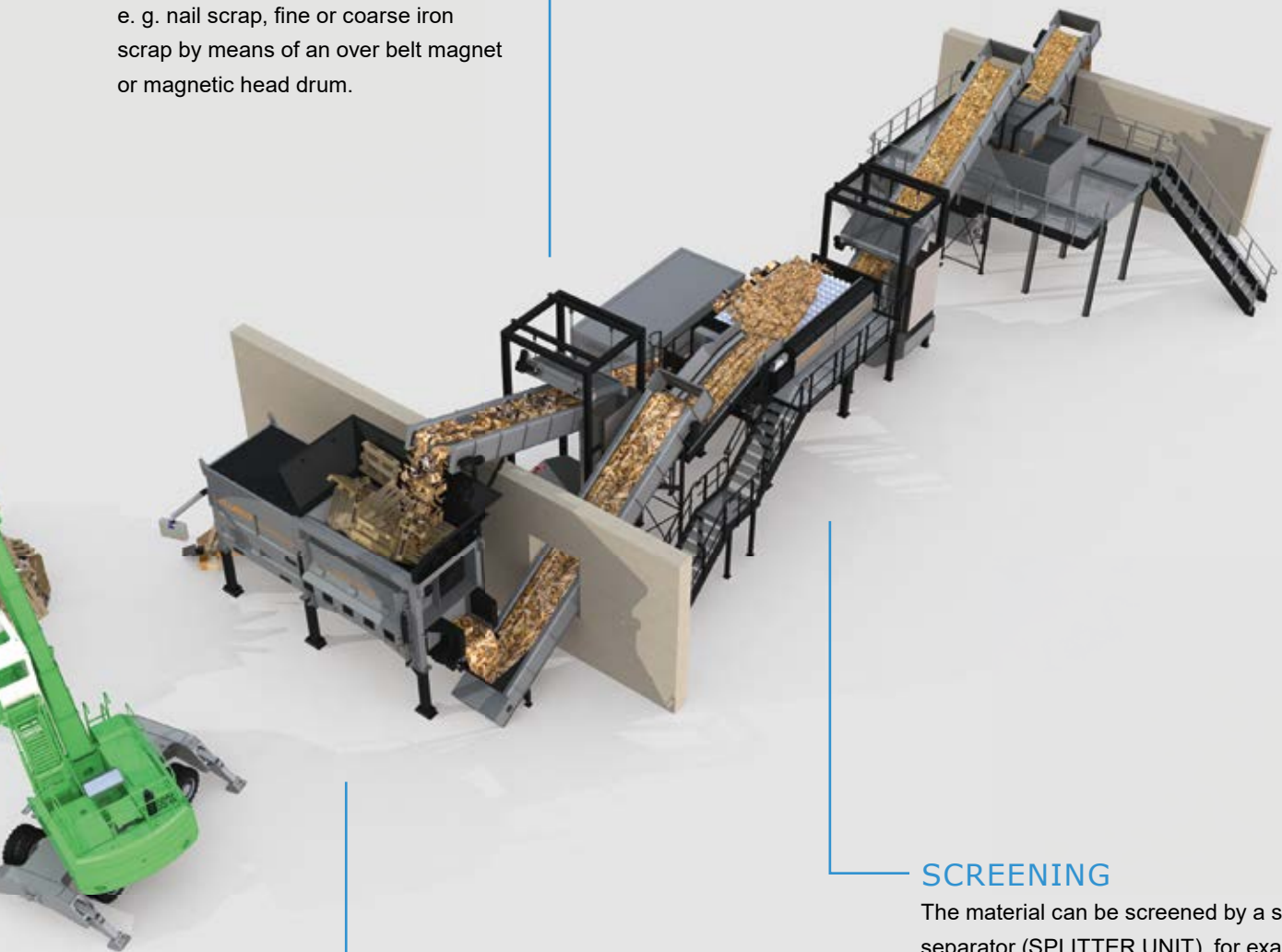


NON-FERROUS-METAL SEPARATOR

Separation of non-ferromagnetic materials.

MAGNET

Separation of ferrous metals, e. g. nail scrap, fine or coarse iron scrap by means of an over belt magnet or magnetic head drum.



SCREENING

The material can be screened by a spiral shaft separator (SPLITTER UNIT), for example.

The oversize is discharged to a conveyor and returned to the shredder. It is also possible to separate the material with a star screen (DST) or a drum screen (SM / SST).



PRE-SHREDDING

By means of a wheel loader or excavator with grab attachment, the waste wood is fed directly into the CERON. The flexible shredding system with various tool sets allows a precise adjustment to the required final product.



EXEMPLARY PROCEDURES AT A GLANCE



FINE SHREDDING

The material is shredded for a defined grain size with a fine shredder of the AK series.

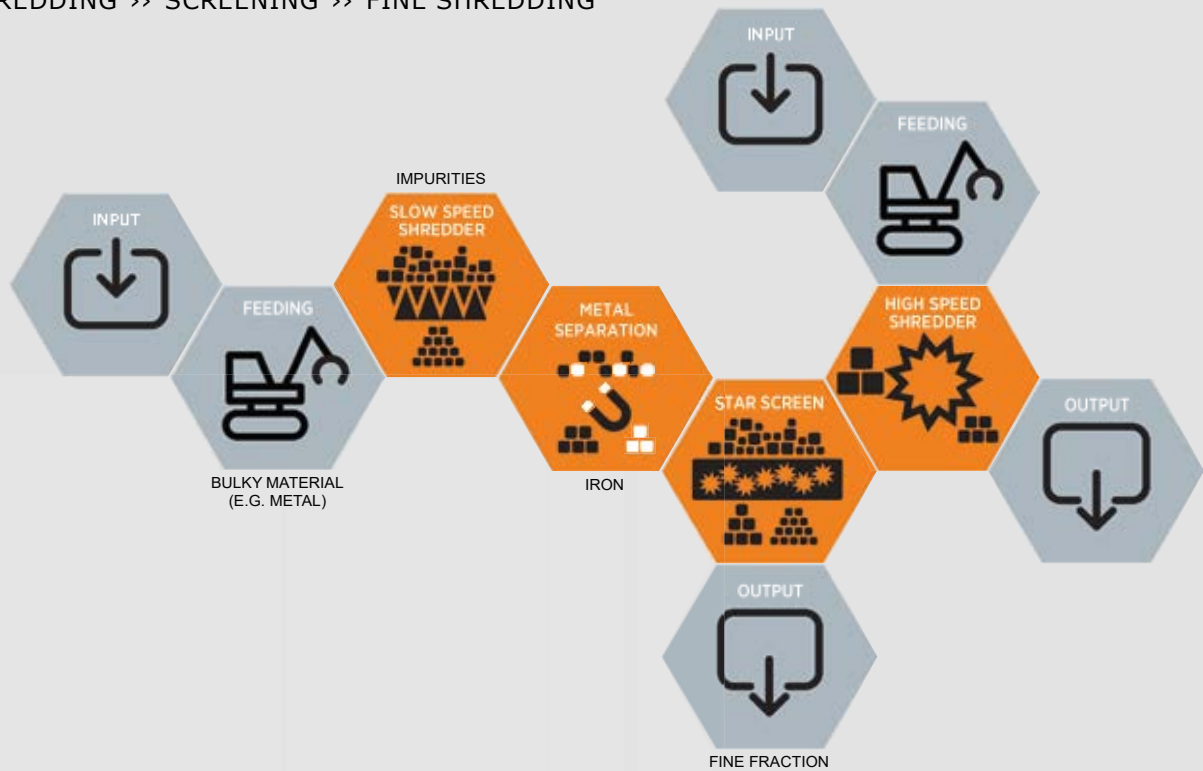
CERON - SERIES

Showing teeth - the CERON types have no problem with that. They prefer to use their biting force for the most difficult shredding tasks. It ensures a permanently high output quality with low fines content and low operating costs especially in the field of waste wood.



PROCESS DIAGRAM

PRE-SHREDDING >> SCREENING >> FINE SHREDDING



AK - SERIES

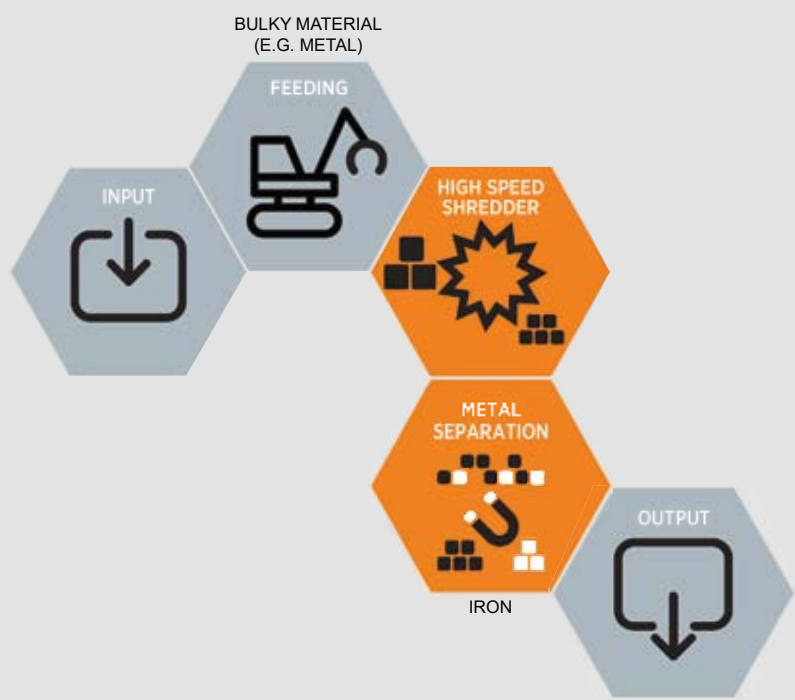
With its high impact force, our AK series fine shredder produces a homogeneous output material and exposes contaminants. The machine is loaded by a wheel loader and/or upstream conveyors. The fully automatic, load-sensing material infeed by a scraper floor and a feed-in drum ensures a smooth material flow.



EXEMPLARY PROCEDURES AT A GLANCE

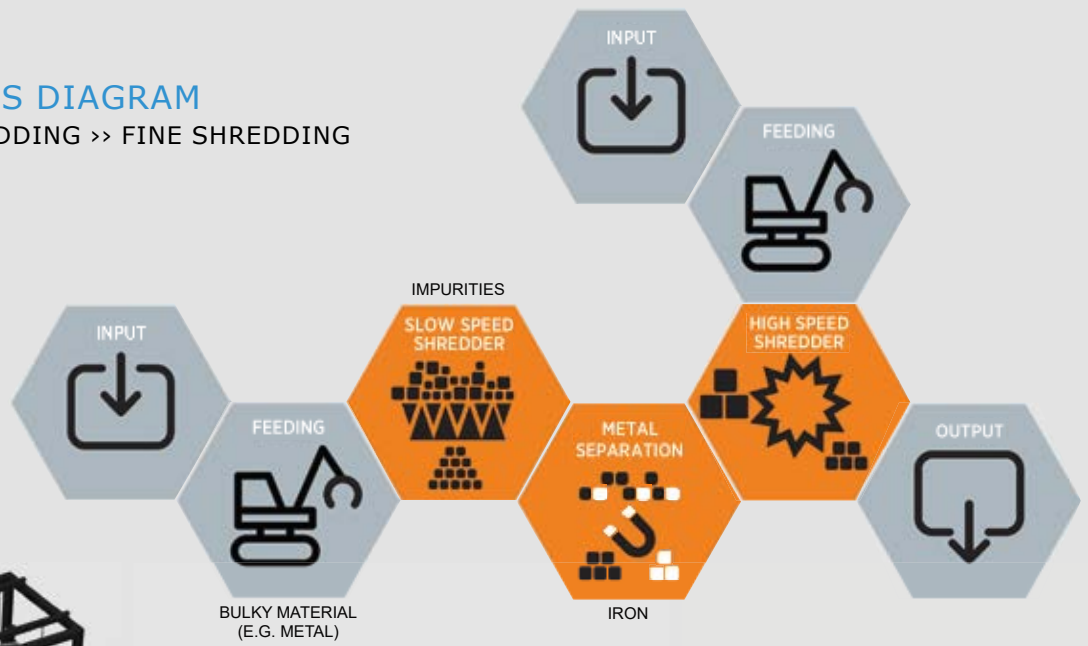


PROCESS DIAGRAM FINE SHREDDING



PROCESS DIAGRAM

PRE-SHREDDING >> FINE SHREDDING



MACHINE OVERVIEW



PRE-SHREDDING

SLOW SPEED SHREDDER LINE
CERON - SERIES



FINE SHREDDING

HIGH SPEED SHREDDER LINE
AK - SERIES



All advantages at a glance

- Powerful and impurity resistant
- Maximum throughput for difficult shredding tasks
- Highly efficient, speed adjustable drive
- Robust solid steel construction
- Coarse shredding (prevention of fines)
- User-friendly access and minimal maintenance
- Low operating costs
- Low dust and noise emission
- Automatic detection of contaminants and discharge
- Quick-change system for wear parts

- Homogeneous output material
- Swinging flails resistant against impurities
- Exposed impurities
- Adjustable throughput
- Quick change basket system variable output grain size
- Fully automatic, load-dependent material feeding by a scraper floor and a feed-in drum
- Different flail types applicable
- Feeding with conveyor belt and/or by wheel loader / grab



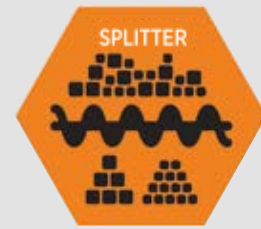
SCREENING

TROMMEL LINE
SM/SST - SERIES



SCREENING

STAR SCREEN LINE
DST - SERIES



SEPARATION / SCREENING

SPLITTER LINE
SPLITTER UNIT -
SERIES



- Simple and robust technology
- Flexible results through tailored drums (punched plate, mesh wire, changeable plates)
- Quick drum change
- Maximum throughput
- Almost maintenance-free
- Multiple sieve sections possible
- Proven over a thousand times

- Defined screen section through various star configuration
- Maximum throughput
- Very exact classification possible
- Small construction size

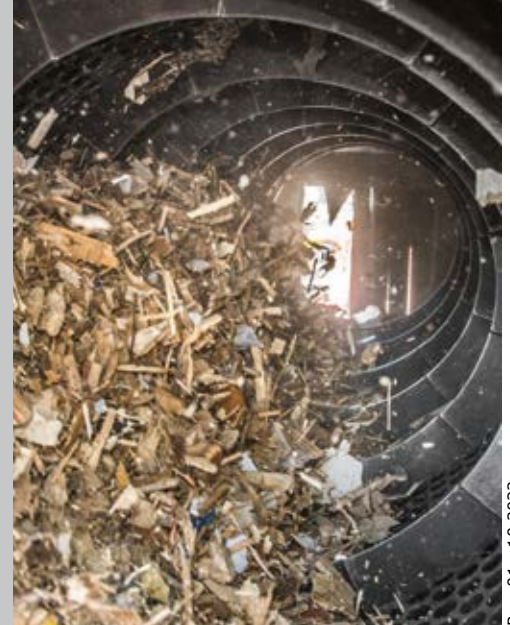
- Self-cleaning, wrap resistant thus optimal separation of difficult materials
- Impurity resistant
- No stick grain
- Minimal maintenance and running costs
- Space saving

We would also be pleased to provide you alternative procedures and techniques. Please contact us!



The advantages of recycling with ALLRECO thought-out solutions

- The perfect solution for every application
- Low treatment costs per tonne
- Maximum throughput
- Innovative concepts with crushing, screening and separation for optimal output quality
- Simple handling
- Low proportion of fine grain
- ALLRECO service and quality included



Rev. 01 - 10.2022

ALLRECO GmbH
Steinbrink 4
D-42555 Velbert
Germany

+49 2052 6039 0
info@allreco.de

allreco.de

ALLRECO