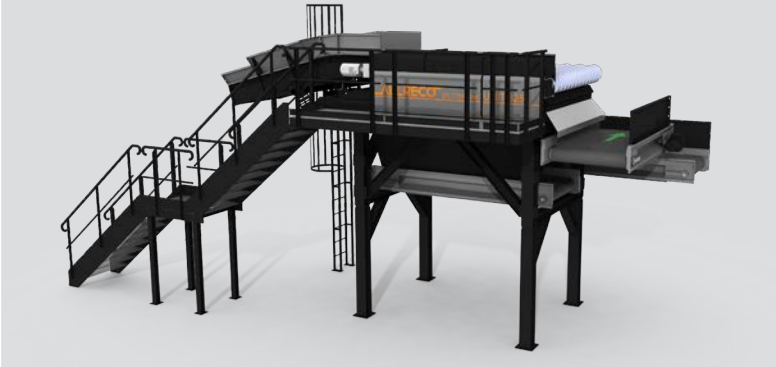


SPLITTER UNIT 325

TECHNICAL DATA



Basic machine (incl. feeding conveyor and screen deck)

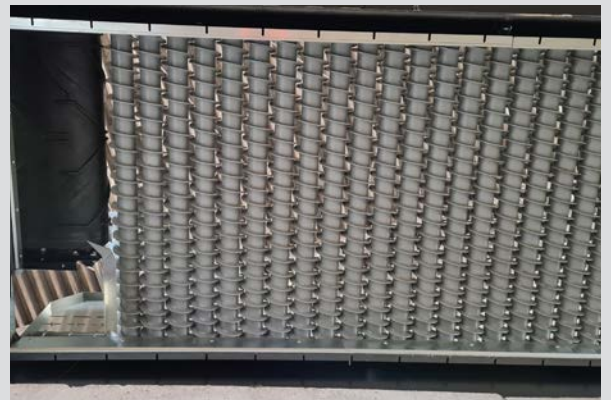
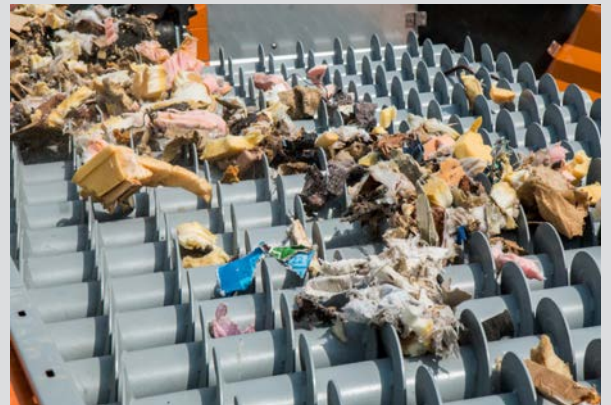
Weight	5.400 kg
Length	6.350 mm
Width	2.930 mm
Height	1.640 mm
Feeding conveyor	
Version	Flat belt conveyor
Belt length	3.100 mm
Belt width	1.200 mm
Drive	worm-helical gear unit
Power	4,0 kW
Screen deck	
Length	3.000 mm
Width	2.500 mm
Screen size	selectable
Drive	Bevel gear drive motor
Power	1 or 2 x 4 kW (depending on the screen size)

The technical data are approximate and depends on the machine equipment (subject to change without notice).



Applications

Our splitter series can be applied universally when it comes to classifying waste and raw materials. It is equally suited for waste wood, green waste, household waste, landfill mining material, commercial waste, industrial waste, mixed construction waste and biowaste as well as for recyclable materials that have already been pre-processed.



All advantages at a glance

- Self-cleaning, nearly wrap-free thus optimal separation of difficult materials
- Impurity resistant
- Low stick grain
- Low maintenance and running costs
- Space saving