

## AK 540 VE

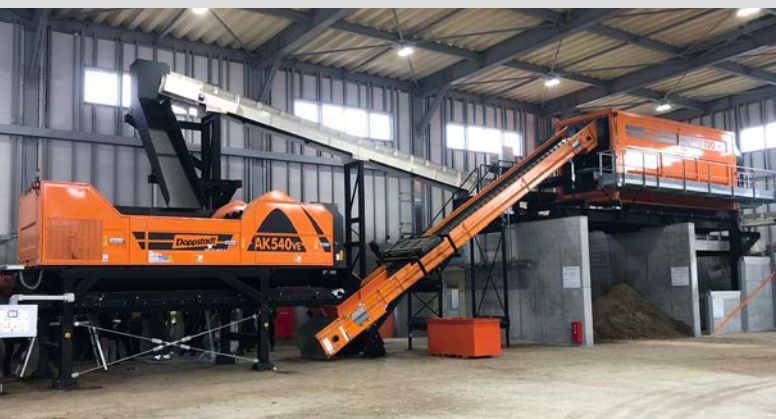
### TECHNICAL DATA



Weight	22.700 kg
Length (basic machine)	7.880 mm
Width (basic machine)	2.630 mm
Height (basic machine)	3.052 mm (incl. 1090 mm subframe)
Motor type	AC-motor frequency driven
Rated power	315 kW / 428 PS
Torque	2.021 Nm
Feeding width (minimal)	2.650 mm
Feeding height (minimal)	2.280 mm (incl. 1090 mm subframe)
Intake height (minimal)	538 mm
<b>Flail drum</b>	
Width	1.770 mm
Diameter	1.100 mm
Rotational speed	1.040 rpm
Fails total	36
<b>Discharge conveyor</b>	
Length	6.000 mm
Width	1.600 mm
Belt speed	0,5 m/s

Freely selectable flail equipment: carbide, bear claw, chisel.  
Conversion to other flail equipment possible.

The technical data are approximate and depends on the machine equipment  
(subject to change without notice).



### Applications

The fine shredders of the AK series can be used for shredding of biowaste and green waste in composting plants, of various wood qualities for waste wood processing, as well as for a wide variety of shredding tasks when processing biomass.



### All advantages at a glance

- Homogeneous output material
- Swinging flails - resistant against impurities
- Exposed impurities
- Adjustable throughput
- Quick change basket system - variable output grain size
- Fully automatic, load-dependent material feeding by a scraper floor and a feed-in drum
- Feeding with conveyor belt, wheel loader or grab